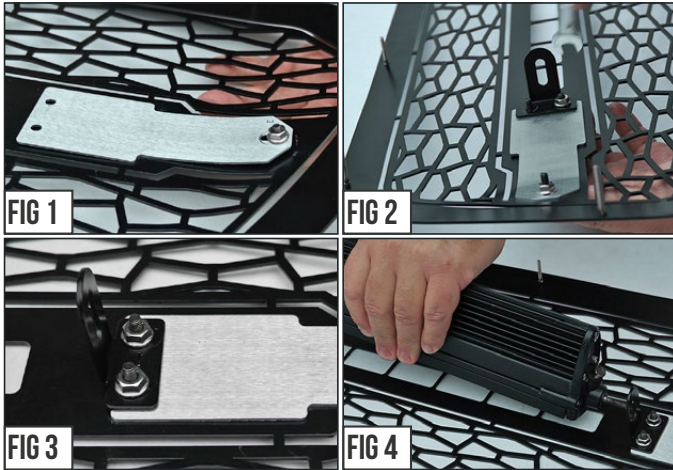


START HERE The ZROADZ Series Grilles comes into 2 different configurations. One style features the LED Light Bar mounting hidden on the backside, while the other style has exposed mounting provisions on the face side of the grille. Please note this and identify your ZROADZ Grille Series configuration and follow the instruction version that corresponds with your grille.

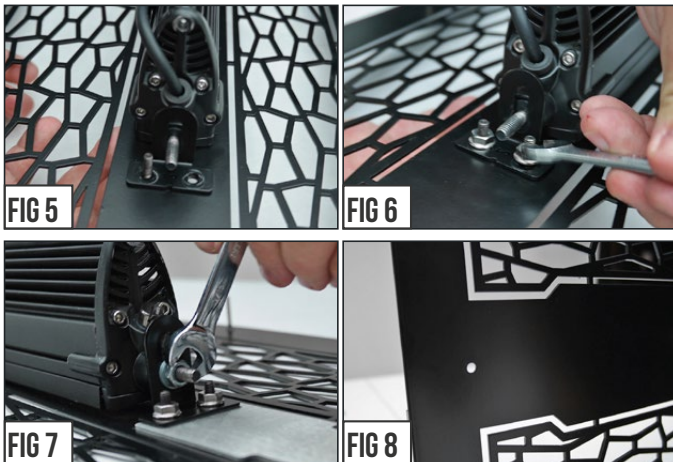
GRILLE CONFIGURATION STYLE 1



STEP 1 Lay out your parts. From the backside of the grille, put into place the ZROADZ Logo Backing Plate.



STEP 2 Put into place one of the Bracket Tabs and secure with provided Hardware as seen in Fig. # 2-4 and then from the backside of grille position LED Light Bar.

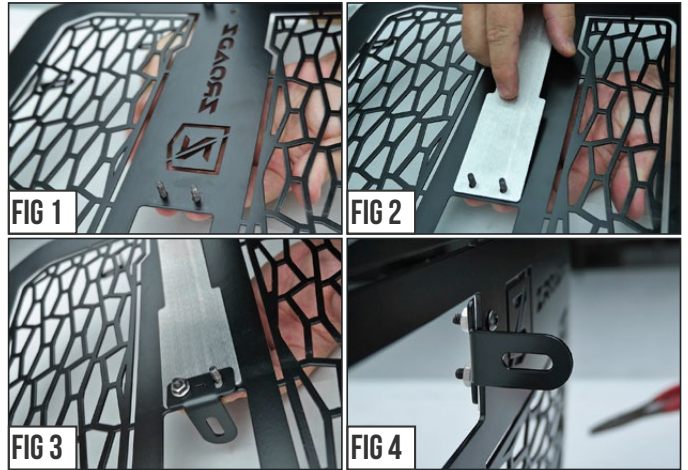


STEP 3 With LED Light placement set, put into position the remaining bracket and the finally tighten LED and all Mounting Brackets into their final secured position.

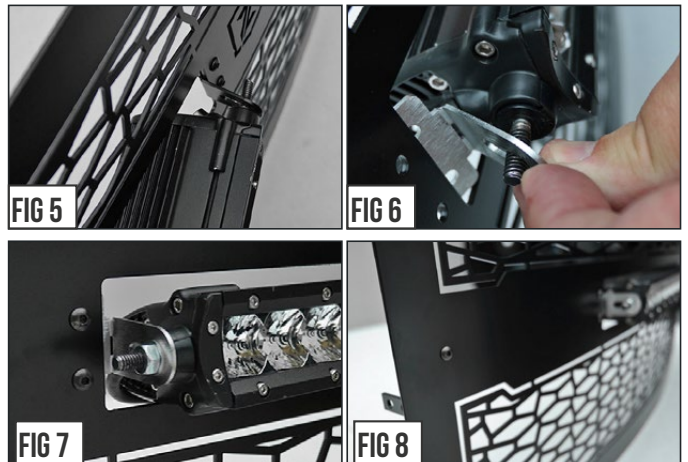
GRILLE CONFIGURATION STYLE 2



STEP 1 Lay out your parts. From the backside of the grille, put into place the ZROADZ Logo Backing Plate.



STEP 2 Put into place one of the Bracket Tabs and secure with provided Hardware as seen in Fig. # 1-4.



STEP 3 From the face side of grille slip the LED Light bar into place. On the opposite side, position the remaining bracket and finally tighten LED and Brackets into position.

STEP 4 There is a final step for both styles of ZROADZ Grilles. See both of the Figure #8 Images and note that there is an exposed hole. Use the Provided Hardware Button Head Screw and fill the hole and tightened down with Nut. This will create symmetrical look from side to side.

Z319321
07-14 TOYOTA
FJ CRUISER



Z319321
07-14 TOYOTA
FJ CRUISER

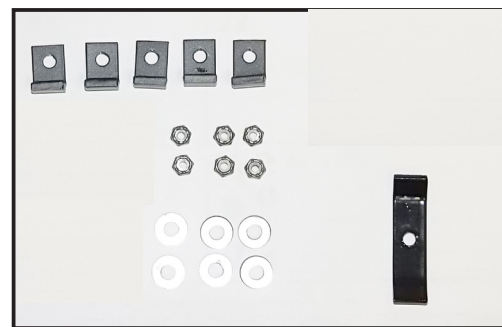
07-14 TOYOTA FJ CRUISER
ZROADZ Series Main Grille 1 Pc.

TOOLS REQUIRED:

Flat/Phillips Screw Drivers
Socket set
Die Grinder
Drill & 1/8" Drill Bit

PARTS LIST:

(1) 2" Flange Bracket
(5) 1/2" L Bracket
(6) 6/32" Nylon Lock Nuts
(6) #10 Flat Washers

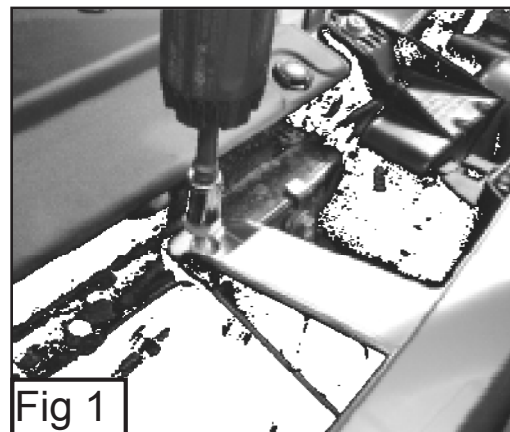


PLEASE READ AND UNDERSTAND ALL INSTRUCTIONS BEFORE INSTALLATION. Auto makers offer various models of each vehicle and occasionally manufacture more than one body style of the same model. To assure your part is correct; our tech department can be contacted at tech@trexbillet.com to verify fitment or assist with tech questions. All other inquiries can be directed to info@trexbillet.com. In the event you do not have internet access please call 1-800-287-5900.

Factory Grill Removal

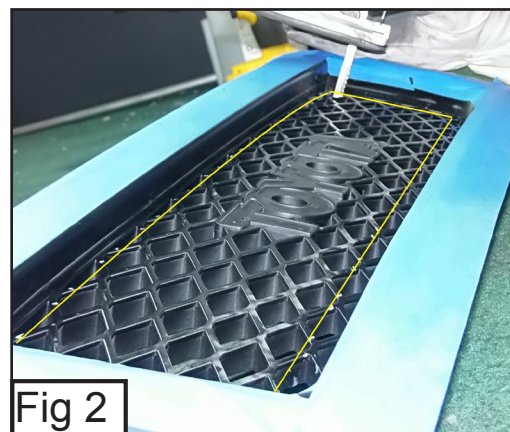
Step 1

Unbolt the two 10 mm bolts on top of the grille (Fig 1). Unfasten the three plastic clips securing the grille to the core support; remove the grille. The factory Toyota logo must be removed from the factory mesh. The logo has small pins that go through the grille to the back; these pins are melted to secure the logo. Use a die grinder (or similar tool) to remove the melted plastic. Then the logo can be removed from the front.



Step 2 Torch Grille Installation

Cutout the honeycomb factory grille in order to give the LEDs access. Draw a guide line along the front face of your factory grille, give approximate half inch space between the factory grille lip and your guide line all around (Fig 2). Carefully cut your factory grille using a jig saw. along the line. Use a sanding disk (or similar tool) to smooth the cut areas.



Z319321
07-14 TOYOTA
FJ CRUISER



Z319321
07-14 TOYOTA
FJ CRUISER

Step 3

Center the grille in place (Fig 3). Use the 2" flange bracket to secure the center stud on the bottom. Use the small ½ L brackets and remaining nuts and washers to secure the grille.

