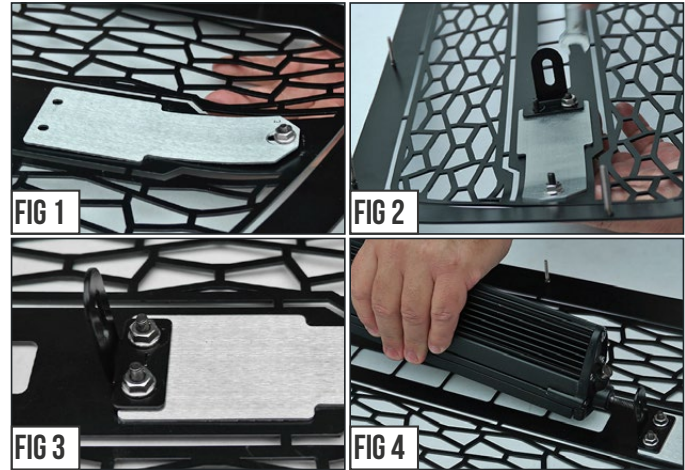


START HERE The ZROADZ Series Grilles comes into 2 different configurations. One style features the LED Light Bar mounting hidden on the backside, while the other style has exposed mounting provisions on the face side of the grille. Please note this and identify your ZROADZ Grille Series configuration and follow the instruction version that corresponds with your grille.

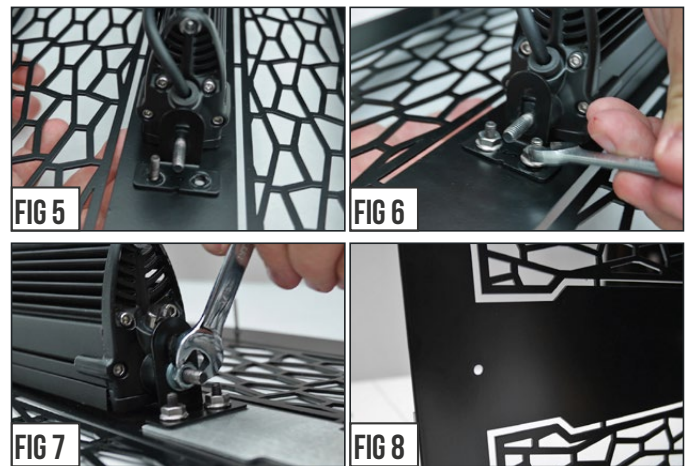
GRILLE CONFIGURATION STYLE 1



STEP 1 Lay out your parts. From the backside of the grille, put into place the ZROADZ Logo Backing Plate.



STEP 2 Put into place one of the Bracket Tabs and secure with provided Hardware as seen in Fig. # 2-4 and then from the backside of grille position LED Light Bar.

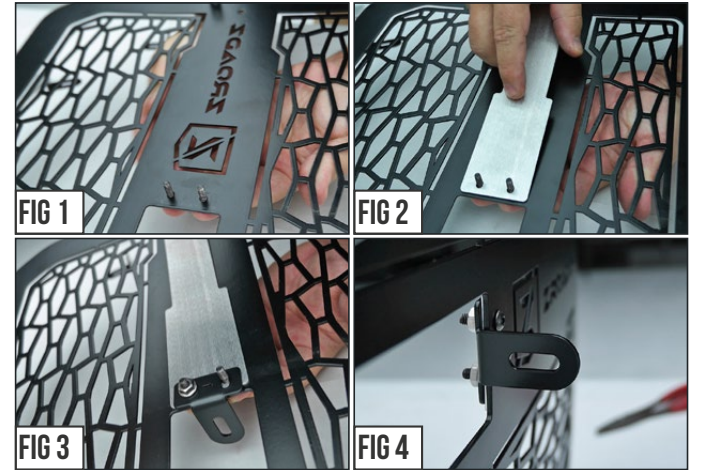


STEP 3 With LED Light placement set, put into position the remaining bracket and the finally tighten LED and all Mounting Brackets into their final secured position.

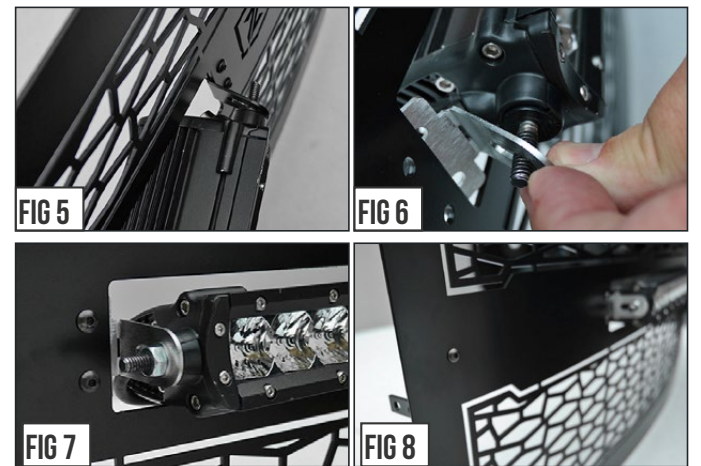
GRILLE CONFIGURATION STYLE 2



STEP 1 Lay out your parts. From the backside of the grille, put into place the ZROADZ Logo Backing Plate.



STEP 2 Put into place one of the Bracket Tabs and secure with provided Hardware as seen in Fig. # 1-4.



STEP 3 From the face side of grille slip the LED Light bar into place. On the opposite side, position the remaining bracket and finally tighten LED and Brackets into position.

STEP 4 There is a final step for both styles of ZROADZ Grilles. See both of the Figure #8 Images and note that there is an exposed hole. Use the Provided Hardware Button Head Screw and fill the hole and tightened down with Nut. This will create symmetrical look from side to side.

Z315681
09-10 FORD F150



Z315681
09-10 FORD F150

2009 FORD F150

ZROADZ Series Main Grille 1 Pc.

TOOLS REQUIRED:

8mm, 10mm Socket and Ratchet
Jigsaw
Die Grinder & sanding wheel
Masking Tape

PARTS LIST:

(6) 1 1/2" J Brackets
(8) 1/2" 135 Flange Brackets
(14) 6/32 Nylon Lock Nuts
(1) X-Metal Series 1 Pc. Grille

PLEASE READ AND UNDERSTAND ALL INSTRUCTIONS BEFORE INSTALLATION. Auto makers offer varied models to each vehicle and occasionally manufacture more than one body style of the same model. To assure your part is correct; our tech department can be contacted at tech@trexbillet.com to verify fitment or assist with tech questions. All other inquires can be directed to info@trexbillet.com. In the event you do not have internet access please call 1-800-287-5900.

Step 1

The first step of the installation is to remove the factory grille shell from the vehicle. There are a dozen 10mm nuts holding the grille shell to the bottom of the hood and a black bracket at the lower part of the grille shell that need to be removed.

Step 2

Once you have the grille shell removed use masking tape to cover the front of it to prevent any scratches during installation. The center of the grille shell needs to be removed. Cut across the two vertical bars near the sides of the grille shell with a jigsaw. (Fig 1) Leave a little (1/2") of the material on the vertical bar. (Fig 2) Cut the cross hatch material also, cutting closer to the grille shell. The entire center portion of the grille shell will come out in one piece. (Fig 2)

Step 3

Next use the die grinder to smooth out where the cuts were made. Go around the entire inside of the grille shell and grind it smooth. (Fig 3)

Step 4

Once the inside of the grille shell is smooth, lay the mesh grille into the opening. (Fig 4)

Step 5

While holding the grille in the grille shell, turn the grille over so you can work on the backside. The 6 threaded studs on the side of the mesh grille will use the 6 "J" brackets. Slide a "J" bracket over the threaded stud and hook it over the inside edge of the grille shell. Put a 6/32" nylon lock nut on top of the J" bracket to secure it. Tighten the nut with a 8mm socket. The 8 threaded studs on the top and bottom of the mesh grille use the 8 flange brackets. Slide the flange brackets over the threaded studs and latch the over the inside edge of the grille shell. Use a 6/32" nylon lock nut to secure the flange brackets. Tighten with a 8mm socket. (Fig 5) Reinstall the grille on the vehicle. Installation complete.

