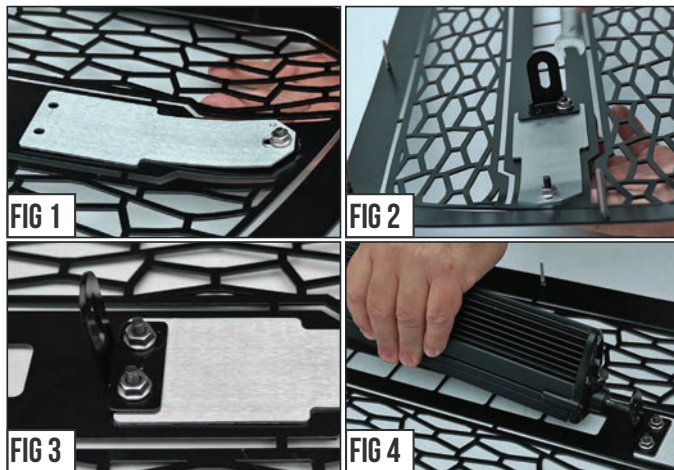


START HERE The ZROADZ Series Grilles comes into 2 different configurations. One style features the LED Light Bar mounting hidden on the backside, while the other style has exposed mounting provisions on the face side of the grille. Please note this and identify your ZROADZ Grille Series configuration and follow the instruction version that corresponds with your grille.

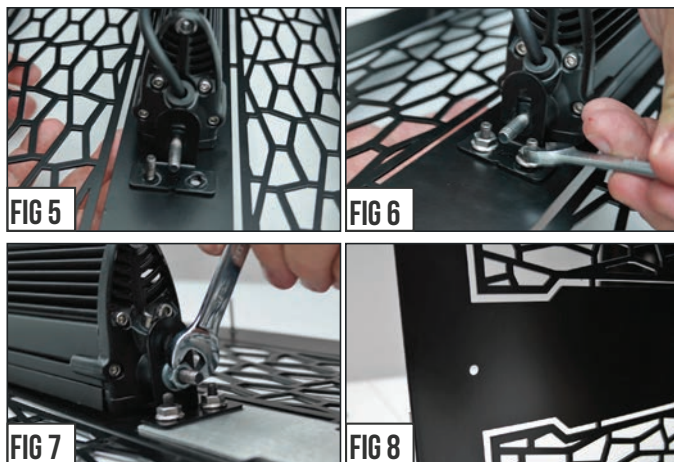
GRILLE CONFIGURATION STYLE 1



STEP 1 Lay out your parts. From the backside of the grille, put into place the ZROADZ Logo Backing Plate.



STEP 2 Put into place one of the Bracket Tabs and secure with provided Hardware as seen in Fig. # 2-4 and then from the backside of grille position LED Light Bar.

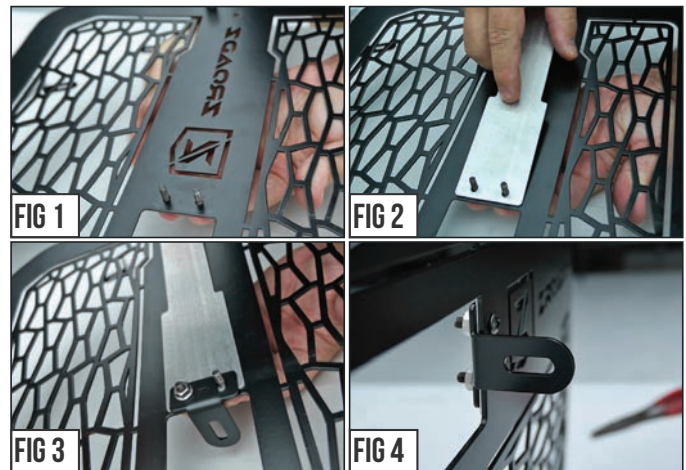


STEP 3 With LED Light placement set, put into position the remaining bracket and the finally tighten LED and all Mounting Brackets into their final secured position.

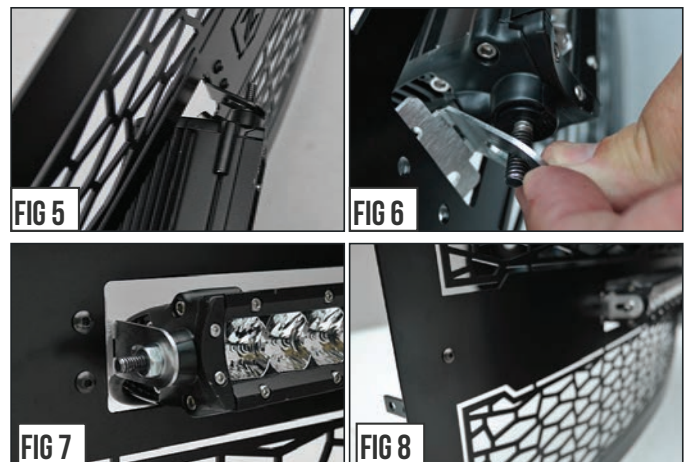
GRILLE CONFIGURATION STYLE 2



STEP 1 Lay out your parts. From the backside of the grille, put into place the ZROADZ Logo Backing Plate.



STEP 2 Put into place one of the Bracket Tabs and secure with provided Hardware as seen in Fig. # 1-4.



STEP 3 From the face side of grille slip the LED Light bar into place. On the opposite side, position the remaining bracket and finally tighten LED and Brackets into position.

STEP 4 There is a final step for both styles of ZROADZ Grilles. See both of the Figure #8 Images and note that there is an exposed hole. Use the Provided Hardware Button Head Screw and fill the hole and tightened down with Nut. This will create symmetrical look from side to side.

GRILLE ASSEMBLY - COMPLETE



ZROADZ SERIES GRILLE

MAIN GRILLE - #Z314651

2019 RAM 1500

PARTS ARE PATENT PENDING. ALL RIGHTS RESERVED - COPYRIGHT ©2019 - T-REX TRUCK PRODUCTS, INC.

PARTS INCLUDED

- (1) ZROADZ Series Main Grille - Part # Z314651

GRILLE DOES FIT: (RAM 1500)
LARAMIE, BIG HORN, & TRADESMAN

GRILLE DOES NOT FIT: (RAM 1500)
REBEL, LARAMIE LONGHORN, LIMITED

HARDWARE INCLUDED

(8) - "C" Brackets
(8) - #10-32 Nylon Nuts

TOOLS REQUIRED

- Prying Tool
- Various Socket Set
- Various Wrenches
- Ratchet Tool
- Ratchet Extensions

INSTALLATION GUIDE

BEFORE YOU BEGIN

PLEASE READ AND UNDERSTAND ALL INSTRUCTIONS BEFORE INSTALLATION. Auto makers offer varied models to each vehicle and occasionally manufacture more than one body style of the same model. To assure your part is correct; our tech department can be contacted at tech@trexbillet.com to verify fitment and assist with technical questions. All other inquiries can be directed to info@trexbillet.com. In the event you do not have internet access please call 1-800-287-5900.

* APPLICATION MODELS VARY. WE RECOMMEND TO VERIFY FITMENT BEFORE BEGINNING INSTALLATION PROCESS.
* IMAGES FEATURED IN THE INSTRUCTION DOCUMENTS MAY NOT ALWAYS EXACTLY MATCH YOUR MODEL OR PART.

START HERE

Turn off engine, chalk tires with stop block, open the hood and disconnect the battery.

LED LIGHT BRACKET INSTALLATION

STEP 1

1) Open and unbox the T-REX package. Sort out all components and hardware pack.

The ZROADZ Series Grille will have to have the LED Light Bar installed to the T-REX Grille. Do that now and then continue with Step #2 below.



FIG 1

STEP 2

2) The OEM Factory Grille will have to be removed.

Begin grille removal by prying free all the Push Pin Retainer Clips (x12) to remove the radiator cover.

SEE FIGURE 2



FIG 2

ZROADZ SERIES GRILLE

MAIN GRILLE - #Z314651

2019 RAM 1500

GRILLE REMOVAL - CONTINUED



FIG 3

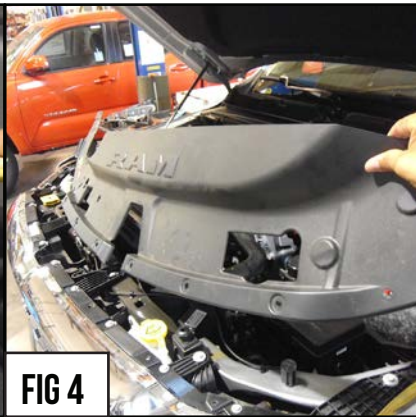


FIG 4



FIG 5



FIG 6

STEP 3

SEE FIGURES 5 & 6

3) With the Radiator Panel Cover removed, Identify and remove the (x18) screws that secure the top trim / grille frame.

STEP 4

SEE FIGURE 7

4) Remove the (x4) screw from the front of the wheel well. Pull back the inner wheel well liner to access the front bumper / fender panel support mount.

STEP 5

SEE FIGURES 8 & 9

5) Pull and remove the (front bumper / fender panel support mount) bolt as seen in Figures 8 & 9.

STEP 6

6) Repeat on opposite side.

FRONT BUMPER FASCIA REMOVAL



FIG 7



FIG 8



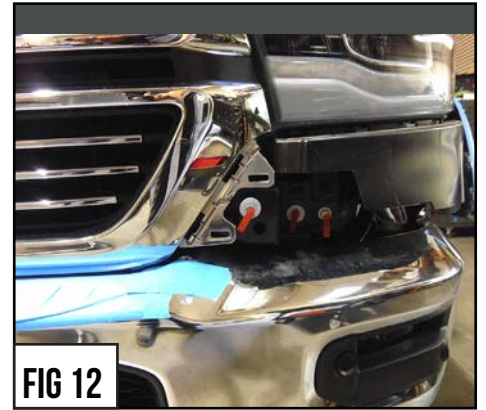
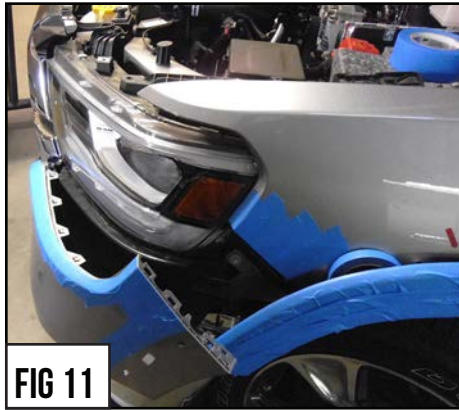
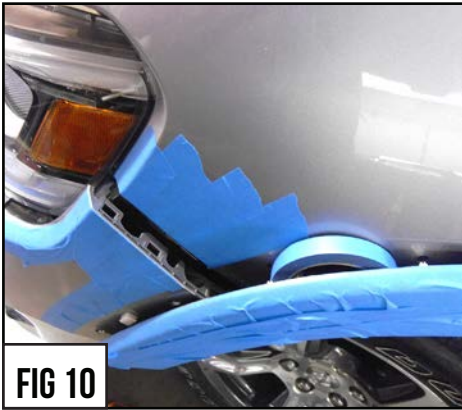
FIG 9

GRILLE REMOVAL - CONTINUED

ZROADZ SERIES GRILLE

GRILLE REMOVAL - CONTINUED

MAIN GRILLE - #Z314651
2019 RAM 1500



STEP 7

SEE FIGURES 10-11

7) Separate the Vehicle's Front Bumper Fascia from the Front Fender. You may need to coax free by pulling the fascia panels pushing on the fender.

STEP 8

SEE FIGURE 12

8) Remove the (x3) bolts as seen in Figure # 12. Repeat on opposite side.

STEP 9

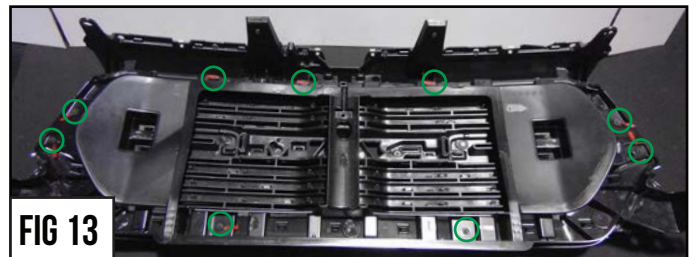
SEE FIGURES 13-14

9) The Vehicle's Factory Grille should now be free to remove.

Set it face down on a soft padded surface

Separate the OEM Grille Plastic Mounting Shroud by removing the screws as seen in Figure #13

GRILLE DISASSEMBLY / GRILLE ASSEMBLY



STEP 10 SEE FIGURES 15-16

10) With the OEM Factory Grille fully disassembled, set aside, and take the OEM Grille Plastic Mounting Shroud and position over and onto new T-REX Replacement Grille.

Secure in place with the provided "C" Bracket the 10-32 Nylon Nuts. The T-REX Replacement Grille should now be ready for installation.



GRILLE ASSEMBLY - COMPLETE

ZROADZ SERIES GRILLE

GRILLE INSTALL - START

MAIN GRILLE - #Z314651
2019 RAM 1500



STEP 11

SEE FIGURE 17

11) Take the assembled grille component and put into place to install onto vehicle.

STEP 12

SEE FIGURE 18

12) Secure the grille to vehicle by screwing the bolts that were removed in Step #8 Step #3.

STEP 13

SEE FIGURES 19-22

13) Re-Install the bumper fascia panels as seen in Figure #19.

Attach the and secure the front fender to bumper fascia panel in the reverse order as they were removed.

Re-Install the Vehicle's Factory Top Trim Piece.

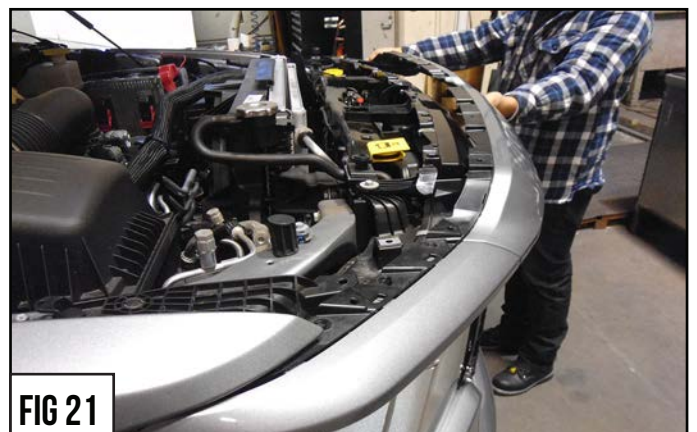
Re-Install the Vehicle's Radiator Cover Panel.

STEP 12

INSPECT YOUR WORK

12) Carefully inspect your work and make certain all vehicle panels have been installed and align correctly as factory fitment.

INSTALLATION



GRILLE INSTALL - COMPLETE



PARTS ARE PATENT PENDING. ALL RIGHTS RESERVED - COPYRIGHT ©2018 - ZROADZ LED, INC.

ZROADZ PRODUCT WARRANTY

ZROADZ PRODUCT WARRANTY

ZROADZ warrants its grille products to be free from defects in material and workmanship for the lifetime of the grille. ZROADZ warrants the finish of its grille products for a 3 year period beginning at the time of sale to the end user. These warranties are limited warranties and do not cover abuse, modification or improper installation nor do they cover finish failure caused by caustic cleaning agents, road salts or other chemicals. ZROADZ reserves the right to repair or replace a defective product at its sole discretion. Any ZROADZ product must be returned to ZROADZ for warranty consideration and must be returned at the customer's expense. In the event that the product is deemed to be defective, the repaired or replaced item will be returned via a surface shipping method to the customer at ZROADZ expense. No provision is made for any labor, rental car or other costs incurred by the failure of its products.

LED LIGHTING EQUIPMENT INSTALLATION / DISCLAIMER

WARNING

PLEASE CONSULT YOUR LOCAL AUTOMOTIVE ELECTRICAL PROFESSIONAL FOR INSTALLATION SERVICES AND ADVICE. ZROADZ IS ONLY EQUIPPED TO PROVIDE BASIC TECHNICAL ASSISTANCE DUE TO THE DIVERSITY OF VEHICLES, VEHICLE OPTIONS & MODIFICATIONS AND LIGHTING CONFIGURATION OPTIONS AVAILABLE.

ZROADZ cannot be held liable due to improper component installation and / or faulty wiring.

GENERAL GUIDELINES

LED Lights & LED Light Bars operate at relatively high currents and should only be installed by qualified personnel with experience in Switched / relayed high draw DC Circuits.

- Light Bars are designed for use only with standard 12v DC power systems
- Light Bars are for OFF-ROAD USE ONLY. Check your local laws & regulations regarding vehicle mounted lights.
- Some Light Bars are equipped with waterproof connectors while others are simply pig-tailed
- Red Wires = POSITIVE | Black Wires = NEGATIVE
- ALWAYS install your lights on a fused circuit. Basic fusing guidelines: maximum 5A for every 10" of LED Light Bar.

GENERAL USE, INSTALL AND ADJUSTMENT TIPS

NOTE 1: ZROADZ LED Light Bars themselves are for OFF-ROAD USE ONLY.

NOTE 2: Light Bars depending on the configuration of your vehicle and its options and/or modifications may need to be adjusted for appropriate beam projection. To adjust the angle of your light bars simply loosen the mounting hardware on either side of each Light Bar, rotate the Light Bar to adjust the angle, then tighten the hardware once the desired angle is achieved (please be careful not to over-tighten the mounting hardware or scratch the protective powder-coat finish). It is best to adjust the angle with the vehicle on level ground with the lights facing a wall, garage door or other solid barrier at a distance of approximately 25-30 feet.

NOTE 3: Please consult a qualified automotive electrical professional for light bar wiring installation.

NOTE 4: An optional universal wiring harness (part# Z390020S-A) is also available that includes high-heat & oil/fuel resistant wires, waterproof connector, 12v relay, 12v rocker switch, in-line fuse holder. Our universal wiring harness significantly expedites the installation process but is not a vehicles specific "Plug & Play" product and does not eliminate the need for a professional installation.

Please contact your local ZROADZ dealer for more information or visit www.zroadz.com.

PRODUCT CARE INFORMATION

PRODUCT CARE INFORMATION

Wash regularly as you would when caring for your vehicles. Never use dish soap. Never leave wet water spots as that may leave a blemish.

MATTE BLACK FINISH

Paint warranty applies to defects in material and / or workmanship, it does not cover the matte finish surface appearance. To enjoy the matte appearance for many years to come, please follow these owner care and maintenance tips. Get a no-shine matte car wash soap that uses no fillers, no silicone, and won't strip your matte paint of its layer of protection. Do not use wax, detail spray, armorall®, or any products made for normal paint. Use only products specifically developed for matte finish paint. Do not use products that are even mildly abrasive, such as polishes, glazes, or rubbing compounds. Do not use mechanical cleaners or polishers. Do not use terry cloth, cloth, or paper towels. Do not rub the finish vigorously, this will burnish the paint finish, causing a permanent shiny spot. Shiny spots cannot be removed.

Do not use commercial car wash facilities or their shine enhancement products. Most car wash brushes, large mechanized "towels", and shine enhancement products can damage matte paint.

Remove foreign substances such as insect remains, tar, and road debris using a soft applicator and a mild solvent; saturate and soak area before cleaning - rub lightly.

Hand-wash with a soft wash mitt and mild cleaning product safe for matte paint. Use microfiber cleaning cloths with alcohol-based window cleaner for basic surface clean-up.

GLOSS BLACK FINISH

ZROADZ with Gloss Black Powder Coated Finish may be washed regularly as you would when caring for your vehicles finish using soap and water. ZROADZ should be waxed at the same time that you wax the vehicle. As a general rule, anything you use to clean your vehicles painted surfaces can be used to clean and maintain your ZROADZ grille. A Gloss powder Coated Finish can be cared for in the same fashion that you would care for your vehicles factory paint job. Never leave wet water spots as that may leave a blemish.