



# 7314521  
# 7314521-BR

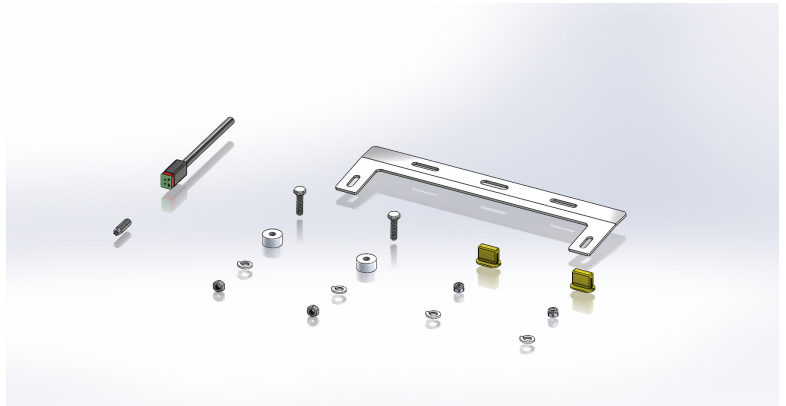
## 2013-2018 DODGE RAM 2500/3500 HD

### Laser Torch Series 1 Pc. Laser Cut Mesh Grille

For off-road use only

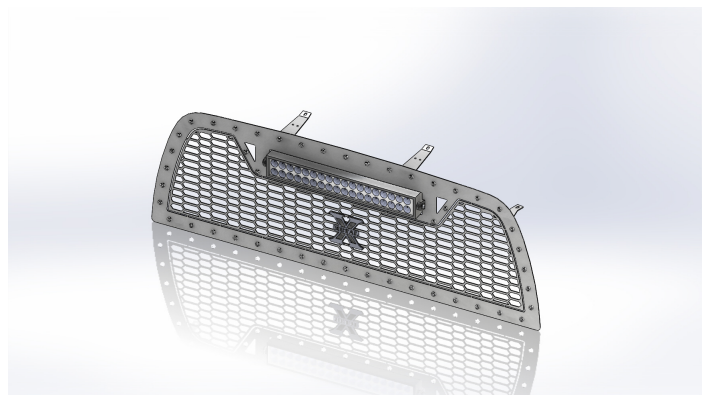
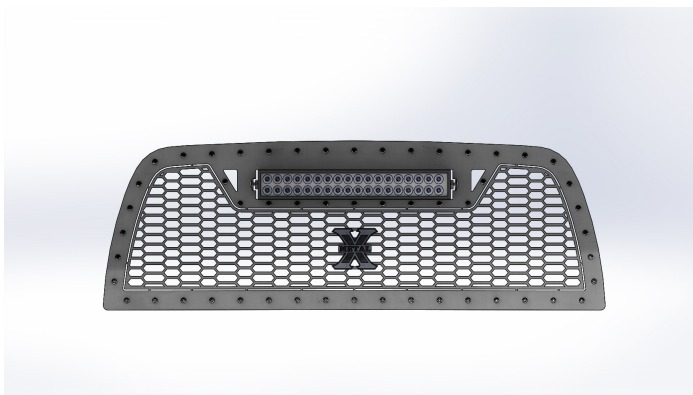
#### PARTS LIST:

DESCRIPTION	QTY.
BRACKET C	1
HIGH TORQUE SCREW GROMMET	2
#10-32 NYLON NUT	2
M6 x 25 mm HEX BOLT	2
1/4" LOCK WASHER	4
M6 HEX NUT SS	2
AL SPACER OD .75" ID .257" L 13/32"	2
SECURITY BIT	1
P. CABLE SINGLE TERMINAL 95"	1



#### TOOLS REQUIRED:

Socket Set





# 7314521  
# 7314521-BR

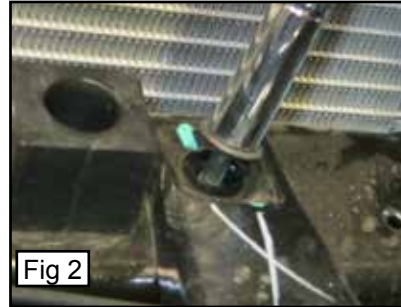
**PLEASE READ AND UNDERSTAND ALL INSTRUCTIONS BEFORE INSTALLATION.** Auto makers offer varied models to each vehicle and occasionally manufacture more than one body style of the same model. To assure your part is correct; our tech department can be contacted at [tech@trexbillet.com](mailto:tech@trexbillet.com) to verify fitment or assist with tech questions. All other inquires can be directed to [info@trexbillet.com](mailto:info@trexbillet.com). In the event you do not have internet access please call 1-800-287-5900.

### Step 1 Grille Removal

Remove four plastic pop clips from the top of the plastic radiator cover.

(Fig. 1) Remove the radiator cover. Remove four 10mm bolts from the top of the factory grille where it attached to the core support.

(Fig. 2) Pull the factory grille from the bottom corner edges up and forward, there are several clips along the bottom of the factory grille that must release. Remove the factory grille.



### Step 2 Main Grille Installation

(Fig. 3) Install the 2 plastic clips onto the ends of the 2 small brackets on the bottom corners of the mesh grille.

(Fig. 4) Install the "C" bracket onto the bottom of the mesh grille. On the back of the mesh grille are two threaded studs, place the bracket end with the holes onto the threaded studs and use two 1/4 lock washers and two 10/32" nylon lock nuts to secure the bracket to the mesh grille.

Now install the mesh grille onto the vehicle. The lower brackets with the plastic clips will install into the factory grille mounting holes, push them down into the mounting holes fully. The four brackets on the top of the mesh grille will install where the factory grille mounted. Use the factory bolts for this.

(Fig. 5) Now attach the "c" bracket to the factory bumper with the M6 x 25 mm bolts, lock washers and nuts. Replace the factory plastic radiator cover with the factory hardware, connect the harness, Installation complete.

